

*Surround yourself with*  
**DALI® SUITE**

*-and get the full experience!*

AUDIO & SURROUND

	Suite 1.7	Suite 2.8	Suite C0.7	Suite C0.8	Suite R0.7	Suite R0.8	Suite S1.2
Frequency response (Hz)	42-25.000	37-25.000	57-25.000	49-25.000	70-25.000	57-25.000	29-200
Crossover frequency (Hz)	2.200	2.900	2.400	2.600	2.100	2.000	
Sensitivity (2,83V/1m.) dB	89,0	90,0	90,0	91,0	86,0	88,0	
Nominal impedance ( Ω )	4,0	4,0	4,0	4,0	8,0	8,0	
Minimum impedance ( Ω )	3,4/210 Hz	3,5/205 Hz	3,5/200 Hz	3,6/190 Hz	6,4/240 Hz	5,7/6.000 Hz	
Maksimum SPL dB	109	111	111	112	105	108	111
Recommended amp. power 8 Ohm	40-160 W	30-160 W	30-150 W	30-160 W	25-80 W	25-100 W	
High frequency driver	1 x 1"	1 x 1"	1 x 1"	1 x 1"	1 x 1"	1 x 1"	
Low/midrange drivers	2 x 5"	2 x 6½"	2 x 5"	2 x 6½"	1 x 5"	1 x 6½"	1 x 12" air-dried pulp cone
Bass reflex system resonance (Hz)	45,0	40,0	41,0	38,5	Sealed	Sealed	
Dimensions H x W x D (cm)	88 x 17 x 31	105 x 20 x 36	16 x 56 x 32	19 x 66 x 39	33 x 24 x 14	40 x 29 x 17	41 x 38 x 42
Dimensions H x W x D (inch.)	35.2 x 6.8 x 12.4	42.0 x 8.0 x 14.4	6.4 x 22.4 x 12.8	7.6 x 26.4 x 15.6	13.2 x 9.6 x 5.6	16.0 x 11.6 x 6.8	16.4 x 15.2 x 16.8
Weight (kg/lbs)	14,0/31.0	20,7/45.75	9,4/20.75	13,2/29.20	4,3/9.50	5,6/12.40	22,0/49.0
Amplifier							200 Watt RMS
Inputs							Stereo line signal input RCA phono, input impedance 22kOhm LFE Line signal input RCA phono, input impedance 22kOhm
Power consumption							230 VAC, 50-60 Hz
Controls							Volume level, lowpass crossover 50-170 Hz, phase (0 or 180°)
Design principle							Active, built-in amplifier and crossover, sealed enclosure
Finish	Golden Cherry and Silver	Golden Cherry and Silver	Golden Cherry and Silver	Golden Cherry and Silver	Golden Cherry and Silver	Golden Cherry and Silver	Golden Cherry and Silver

concept-1.dk



*Surround yourself with*  
**DALI® SUITE**

#### DALI® Denmark

Based in Denmark with strong traditions in engineering and furniture design, DALI® rapidly grew to become an internationally acclaimed loudspeaker maker, praised enthusiastically by proud owners and by independent audio journals around the world. The millions of fine loudspeakers sold by DALI® to satisfied customers in over 36 countries are the result of rare levels of enthusiasm, skill, advanced technology and pure inspiration.

Each DALI® loudspeaker is carefully assembled, tested and packed by a conscientious team who are personally accountable for the final result. Well into our third decade, DALI® embodies a unique blend of cutting edge technologies and fine Scandinavian craftsmanship. For more information, please visit our website at [www.dali.dk](http://www.dali.dk)



*Magic Moments*





## Ready for the ride of a lifetime.....

Elegant to look at or impressive to listen to? This is a conflict that you often encounter when trying to decide which loudspeakers to choose for your surround system or hi-fi. DALI® has developed the New Suite series to bridge that gulf. These speakers are very elegant and functional at the same time. And, they are designed to be undemanding when positioned in your home.

Under that tasty exterior with its lush, Golden Cherry or Silver finish, a wealth of special DALI® solutions all contribute to make the Suite series much more than meets the eye. Just take a glance at those seductively curved side panels. These surely add to the good looks of the speakers, but beneath the surface lies an extremely advanced process that actively increases sound quality. The basics of this system were developed for our high end Euphonia line. A system of grooves run vertically like a comb along the insides. These machined structures are the key element behind the subsequent shaping of the side panels, but they also serve to break up resonance modes inside the cabinet.

But there is more...much more.

The drive units of the Suite series are all in compliance with the "Low Loss" and "Low Mass" principles, pioneered by DALI®. All parts of the drive units including the membranes are built to avoid braking or damping effects and the result is a wealth of information that often disappears in conventional speakers. This makes listening at low levels much more interesting, but, surprising as it may seem, also at loud levels.

An often ignored problem with loudspeakers is the "sweet spot" curse. It is a certifiable fact that many loudspeakers are very, very critical when you sit down in front of them and listen. Only at one exact point do they offer truly

convincing results. Not so with DALI® Suite. We have made sure that you and your guests can all enjoy fine sound. This is not a coincidence, but the result of our "Linear Directivity" principle, which lets you hear an essentially unchanged balance from both speakers even if you are not seated exactly in the middle. Furthermore, the speaker does not change its sound very much even if you move it to a different position in the room. This is because sound reflected from walls and floor is very similar to the direct sound from the speaker, so the perceived balance is maintained even when surroundings change.

If you have ever wanted to immerse yourself in 3-D sound, surround is perfectly suited. But even with stereo sources, 3-D sound is possible IF the timing aspect is done correctly. We have gone to great lengths to ensure that the time aspects are not lost in the Suite speakers, and you can hear this by paying attention to the way a Suite speaker reproduces space. And also, transients, sudden bursts of energy, are more dramatic when timing is spot on.

## Suite 1.7 and 2.8

These are the main speakers in the Suite series. Both are floorstanding designs, admirably suited as front speakers in a surround system or as stereo pairs. The tasteful exterior belies the impressive sound that emerges from these very capable performers.

The 1.7 features twin 5" woofer/midranges and a 1" soft dome tweeter. The bass reflex port is situated on the front panel, permitting the speaker to be placed flush against a wall. A welcome option for a stylish loudspeaker, whose owner would probably feel uncomfortable if restricted by technical considerations in decorating a room. The binding posts on the rear permit bi-wiring, and they are connected directly to the crossover network inside for minimum loss of information. The stylish black base has countersunk threads for easy fitting of the spikes included.

The 2.8 has twin 6.5" woofer/midranges and a 1" soft dome tweeter. The bigger woofers and the larger enclosure result in higher efficiency and the power to move more air, making the 2.8 the obvious choice for large rooms or high-level listening. Even here, the bass reflex port is on the front panel for freedom in positioning. Although this is a large speaker, with a considerable expanse of wood panels, it is surprisingly inert and silent because of the special rib structure inside. The result is a low-coloration, very poised loudspeaker, even when asked to work hard.

The crossover network is isolated from the very potent influences of pressure and vibration inside the enclosures of the floorstanding Suite models. In fact, it has been removed from the bass chamber altogether, to a separate compartment, where it cannot be disturbed. All crossover networks are hand assembled and hard-wired, eschewing the use of printed circuit boards.



## Suite C0.7 and C0.8

Many home cinema enthusiasts consider the center speaker the most important one in the surround system. A very large part of essential information goes to the center channel, and today, the signal is often overwhelming, with lots of bass energy and violent dynamics. The Suite center channel speakers are made with these demands in mind, and they are admirably suited to do their job. All driver units are magnetically shielded, of course. To blend seamlessly with the main speakers, the drive units are almost similar, only the woofers are modified slightly to match the smaller enclosures.

The C0.7 features twin 5" woofer/midranges and a 1" soft dome tweeter. The woofers work together into a reflex enclosure with twin ports on the front panel. Voices are reproduced clearly and openly, while transients emerge with power and snap.



The C0.8 has twin 6.5" woofer/midranges and a 1" soft dome tweeter, and no less than four reflex ports contribute to the very convincing way of handling deep bass that is a characteristic of a large speaker. Speech intelligibility is excellent, and effects sounds are impressive and powerful.

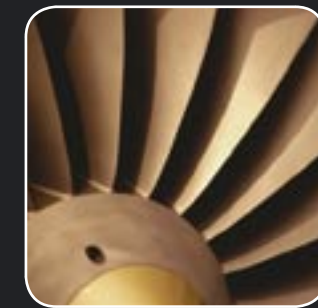
## C0.7 and C0.8

## Suite S1.2

No series of loudspeakers built to perform surround sound is complete without a subwoofer. The Suite S1.2 is just that, and a very impressive one to boot. To begin with, it is not all that common to find a high-power 12" woofer in a sub, and a sealed enclosure is even less common. The Suite 1.2 is sealed because a sealed woofer has the best precision and transients and the best pitch definition. But only if the driving amplifier is sufficiently powerful does a sealed sub really kick, in the physical sense. The 200 watt amplifier of the S1.2 is very powerful, and the purpose-built 12" woofer is made for deep bass. Because there is no bass reflex port, there are no problems with "chuffing" wind noise from the port. Partly because of this, partly because the tendency to boom is not nearly as evident in a sealed sub, you are free to place the S1.2 almost anywhere, even close to the listening position. Controls include Auto Stand-by, Volume, 0° and 180° phase switch, Crossover frequency, LFE input and Adjustable low pass filter on line inputs. All phono sockets are gold-plated for long-term stable contact.



## S1.2



SHAPE - SOUND - ACTION - DETAILS - FUNCTIONALITY - EXPERIENCE - RUSH



Low mass - low loss coated paper cones.



The gold plated multi-functional binding posts.



The 1" soft dome tweeter.



The stylish black base has countersunk threads for easy fitting of the spikes included.

## Suite R0.7 and R0.8

As a complete series, Suite also offers two rear and side speakers that are perfectly matched to the other Suite models, in sound as well as style. They are both made for use as rear speakers in 5.1 systems and as side and rear speakers in 7.1 systems. Extreme flexibility is assured by two means: the various wall-mount suspension fittings on the rear panel and the controlled-directivity sound dispersion. This means that even if you deem it necessary to hang the rear channels below ear height, you just turn them upside down, and the signal aims straight for your ears. They come in mirrored pairs.

With the R0.7 equipped with the exact same 5" woofer/midrange and 1" soft dome tweeter as the Suite 1.7 – and the R0.8 equipped with the exact same 6.5" woofer/midrange and 1" soft dome tweeter as the Suite 2.8 the voice match is as perfect as the convergence in design.

